

TUITION & FEE PRICING

academic year 2009-2010

A Proposal (Revised on May 18, 2009)

(Contingent upon Governor's and BOG's approval)

Presented to:

USF Board of Trustees, May 20, 2009

USF Student Government President, May 7, 2009

USF Graduate Student Council President, May 5, 2009

USF Council of Deans, May 4, 2009

USF President's Cabinet, April 29, 2009

AAMC, April 27, 2009

Tapas K. Das, Ph.D.
Associate Provost of Policy
Analysis, Planning &
Performance



Tuition & Fee Pricing: *academic year 2009-10*

2

Purpose of the Presentation

- Each year, at the end of the state legislative session, USF proposes an updated Tuition and Fee structure within the scope defined by the following:
 1. Tuition legislation 2009 (SB2600, SB762, SB1696)
 2. Existing Florida Statute 1009.24
 3. BOG recommendations

Appropriation Proviso

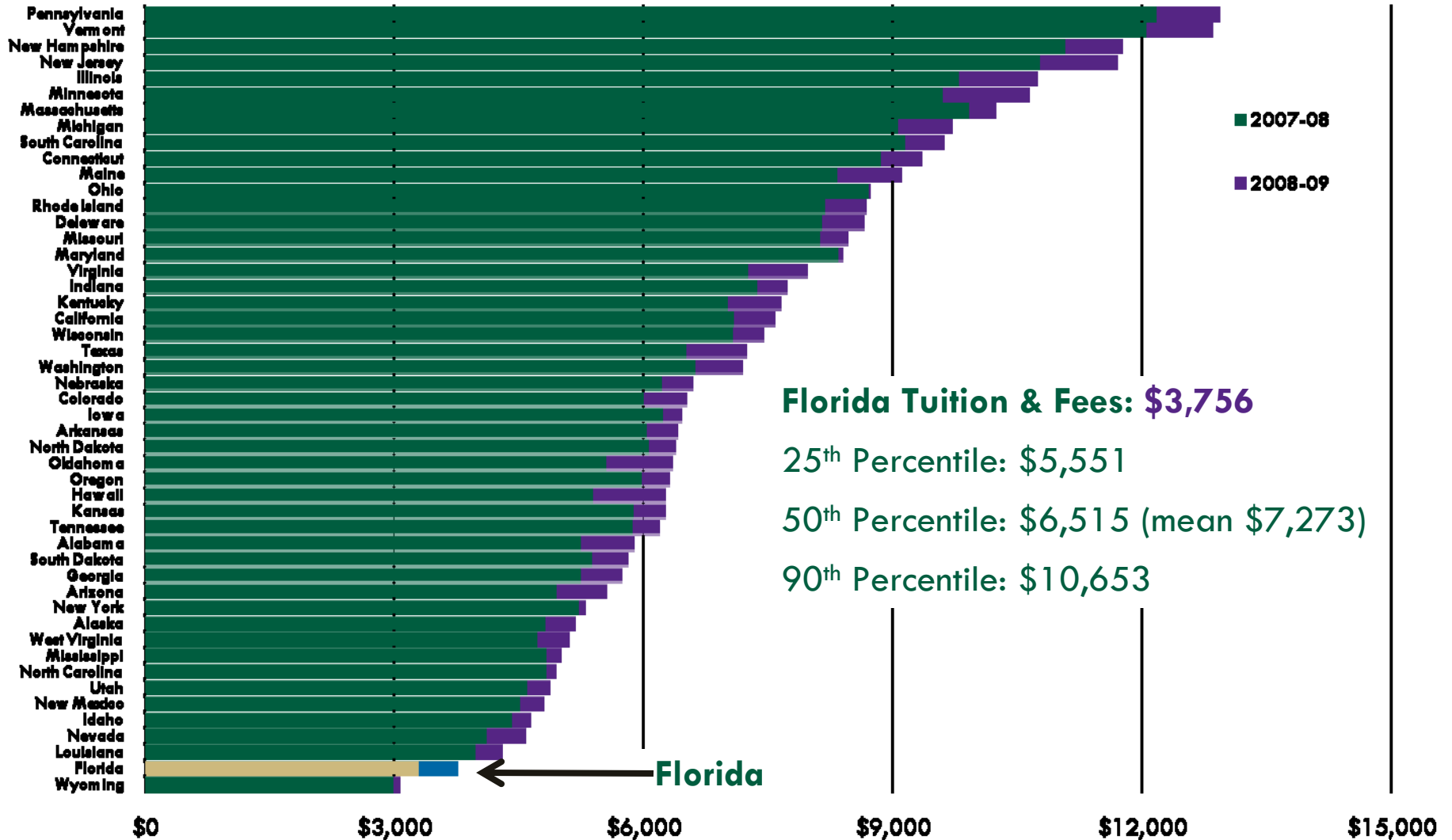
3

8% increase of in-state tuition for all undergraduate students in USF system

□ Approved by the Legislature (pending Governor's approval)

In-State Undergraduate Tuition & Fees RU/VH & RU/H, 2008-09

4



Recommendation

5

#1. **7% tuition differential fee for all undergraduate courses in the USF system** (contingent upon BOG's approval)

- Students are exempt from this fee if:
 - Continuously enrolled since July 1, 2007, *or*
 - Prepaid tuition contracts in effect before July 1, 2007.
- Financial impact of tuition differential on a student per semester (15 credit hours):
 - \$101.70 (USF Tampa)
 - \$86.10 (USF SP, USF S-M, USF Poly)

Recommendation

6

- 70% required to be spent on purposes of undergraduate education.
 - Increased course offerings,
 - Improved graduation rates
 - Increasing the percentage of undergraduate students who are taught by faculty,
 - Decreasing student-faculty ratios
 - Providing salary increases for faculty who have a history of excellence teaching in undergraduate courses,
 - Improving the efficiency of the delivery of undergraduate education through academic advisement and counseling, and
 - Reducing the percentage of students who graduate with excess hours
- 30% shall be expended on need-based financial aid

Recommendation

7

Total cost per year (30 credit hours) for a full-time, in-state undergraduate student (2009-10)

tuition + differential + other fees =

- USF Tampa = **\$4,503** (increase of \$586)
- USF-SP, USF-SM, USF-Poly = **\$3,684** (increase of \$512)

Recommendation

8

#2. 10% increase of graduate in-state tuition

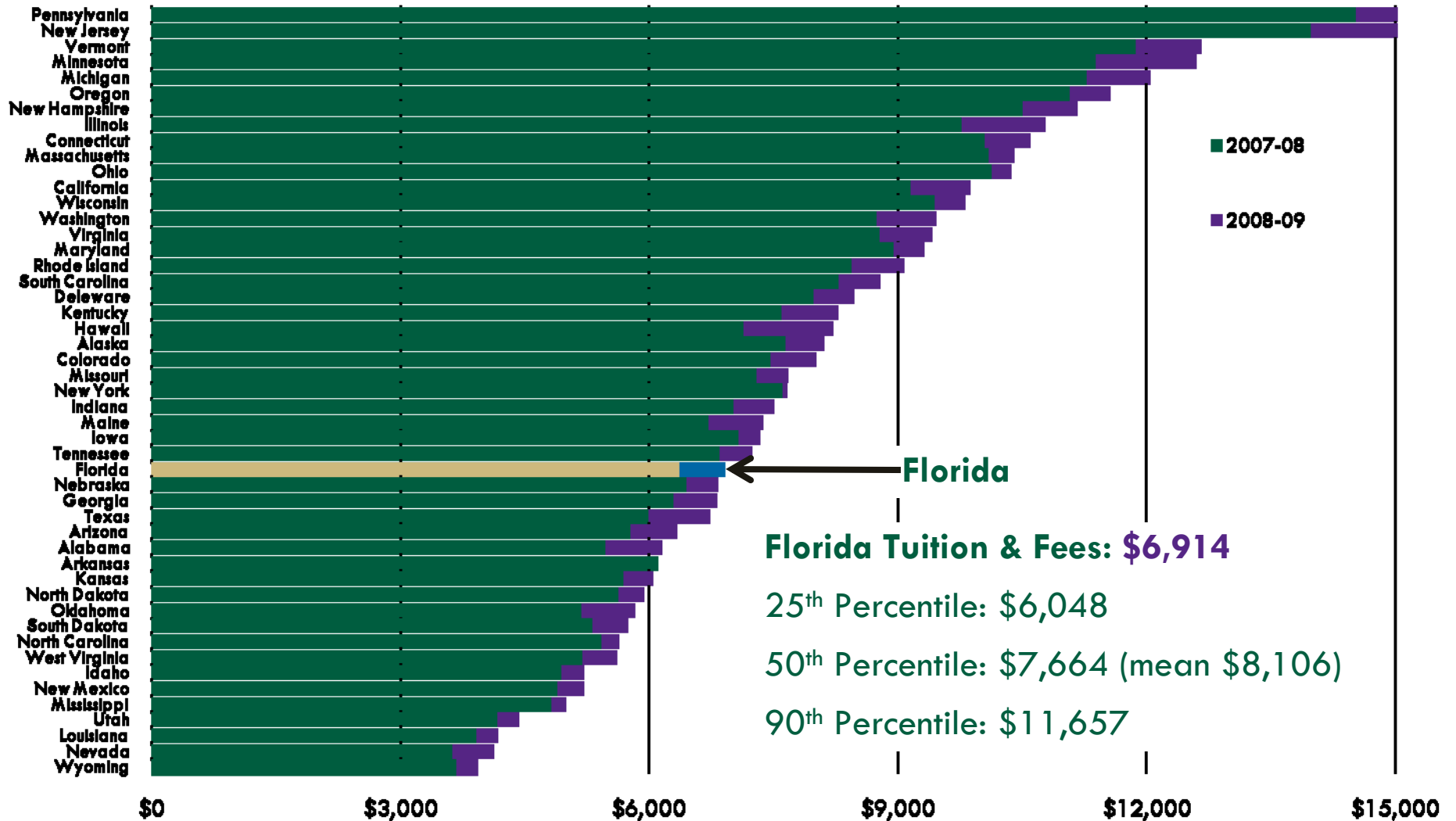
(all students in USF system except MD and DPT programs)

- Tuition will increase from \$242.04/SCH to **\$266.24/SCH**
- College of Business from \$251.17/SCH to **\$276.28/SCH**

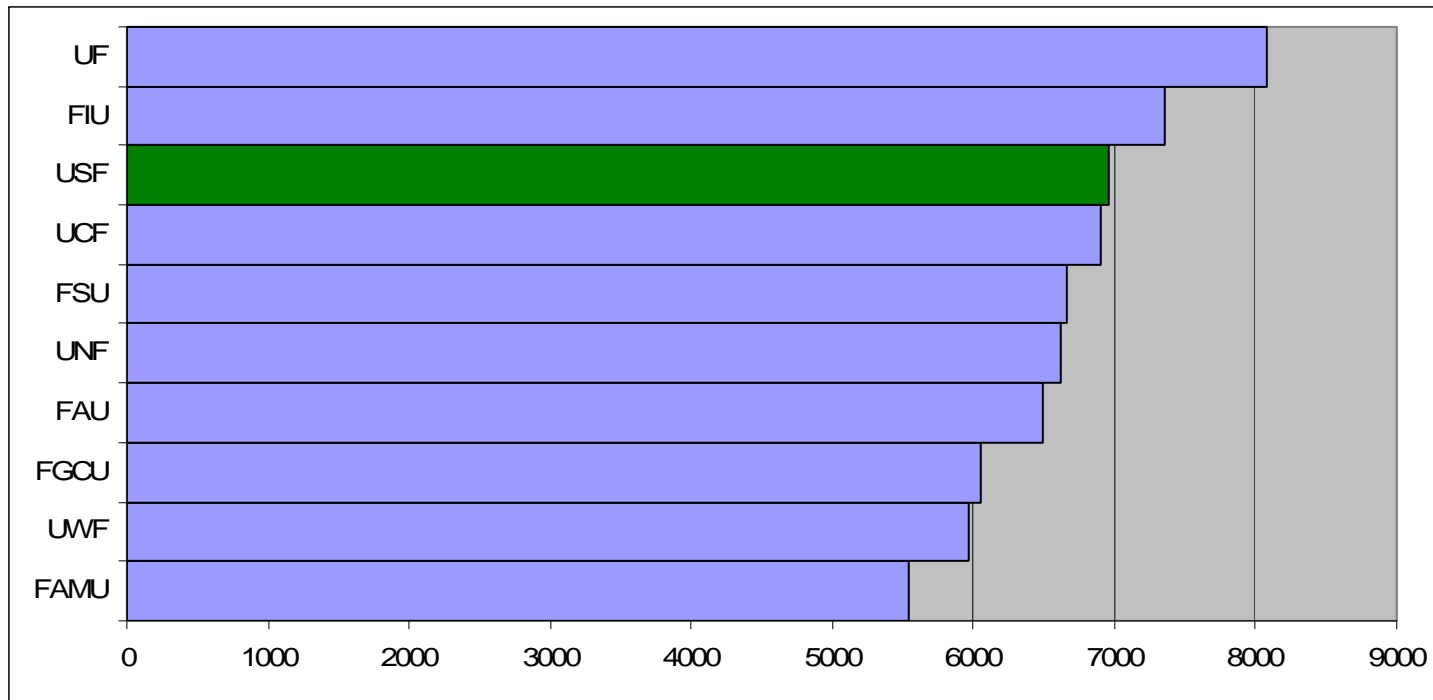
- **Total cost per year 2009-10 (24 credit hours plus other fees):**
 - \$7,963 (increase of \$965)
 - \$8,204 College of Business (increase of \$986)

In-State Graduate Tuition & Fees RU/VH & RU/H, 2008-09

9



In-State Graduate Tuition & Fees for SUS, 2008-09



Recommendation

11

#3. 10% increase of graduate in-state tuition for CRNA and DNP programs (College of Nursing)

□ Increase from \$251.17/SCH to **\$276.28/SCH**

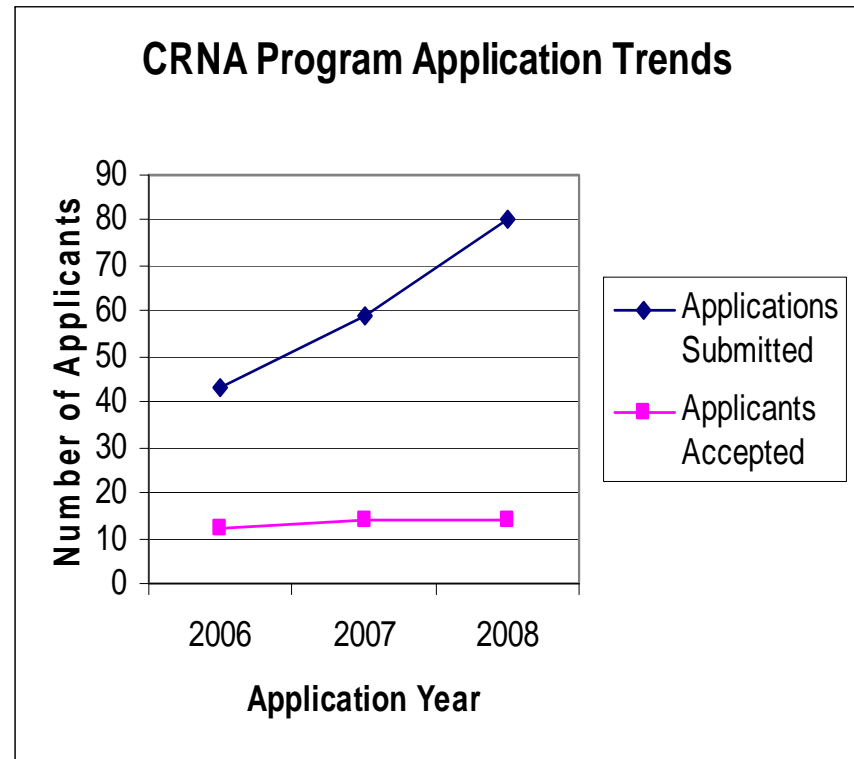
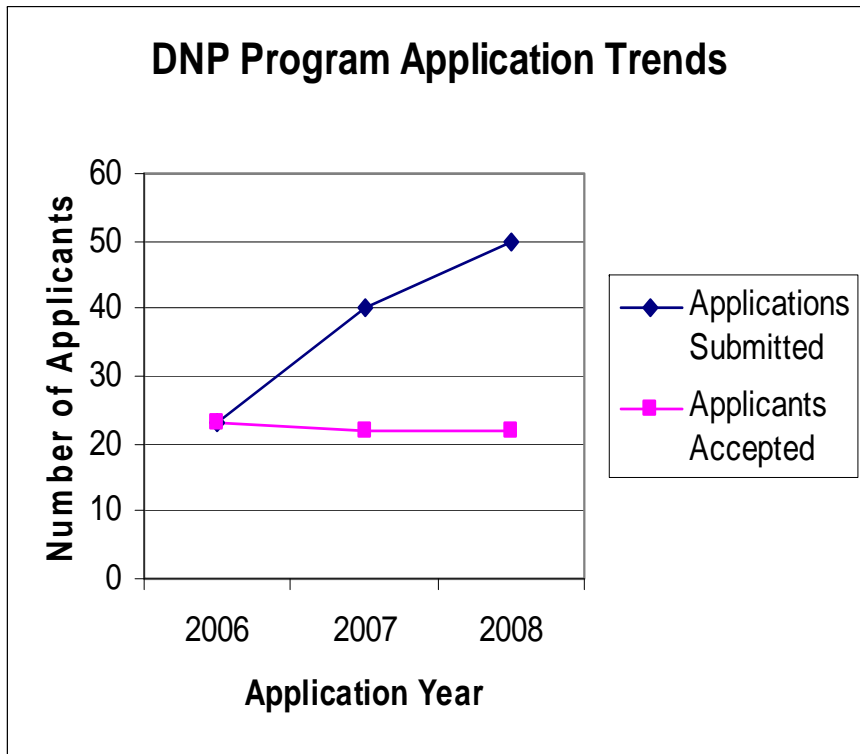
□ **Total cost per year 2009-10 (24 credit hours plus other fees):**

▪ \$8,204 (increase of \$986)

DNP & CRNA programs

College of Nursing

12



High Demand • High Cost of Delivery • High Employment Potential

CRNA average starting salary: \$114,886

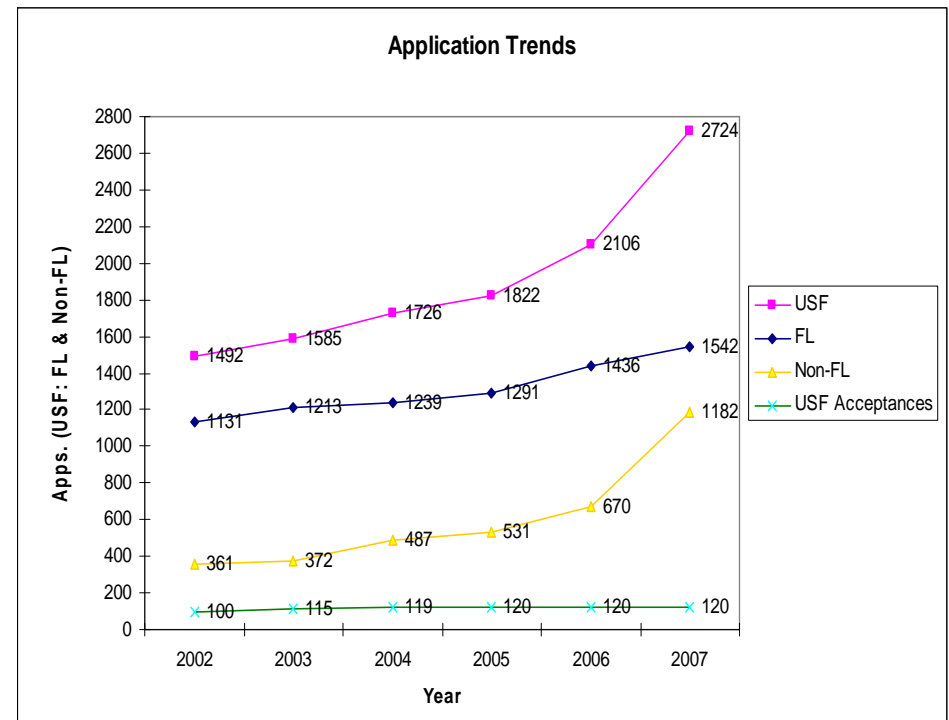
Recommendation

13

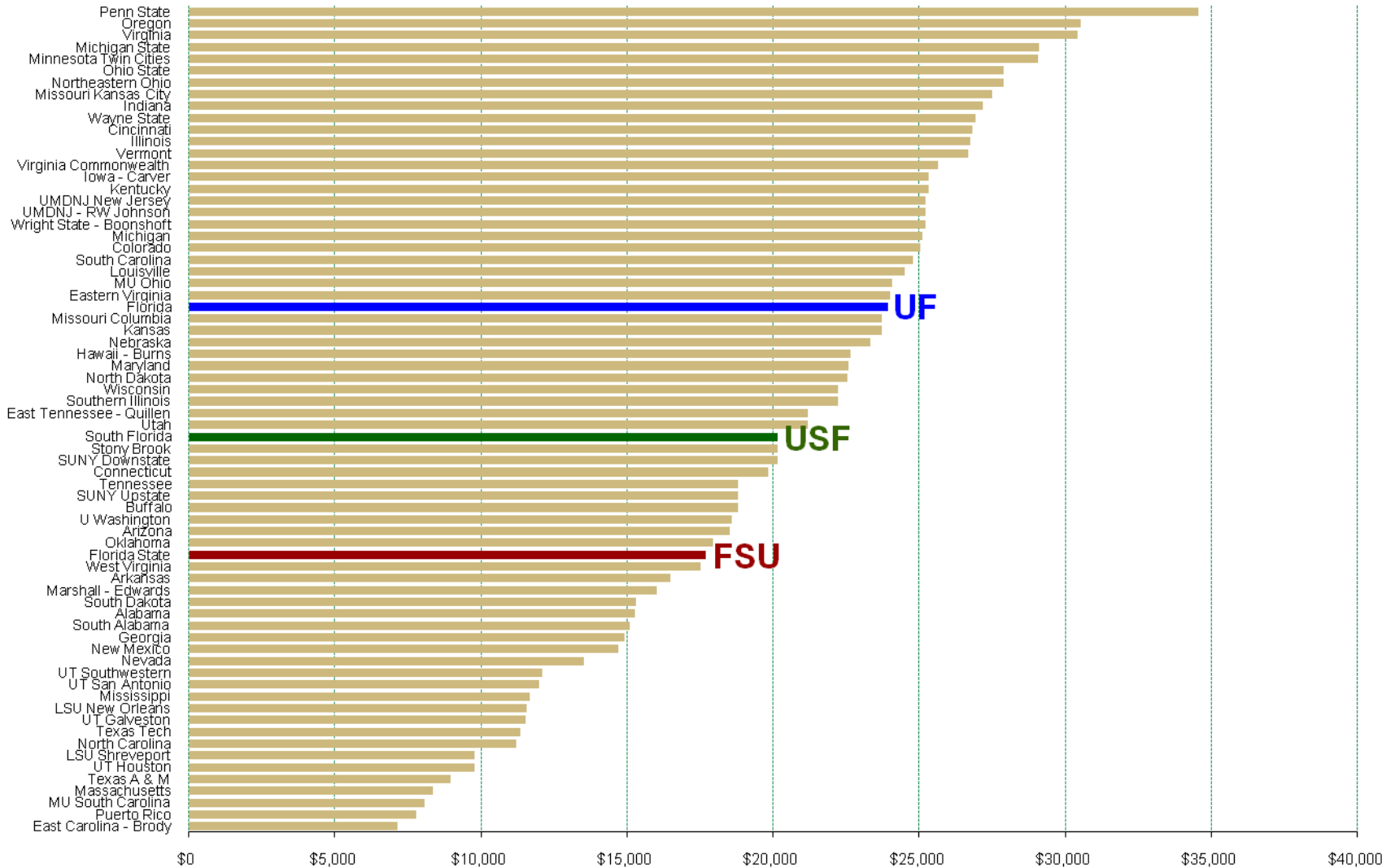
#4. 15% increase of in-state tuition for MD program

High Demand • High Cost of Delivery • High Employment Potential

- Cost to educate each MD student annually is $> \$58,000$ (only \$5 million of the BOG's \$13.2 million request for parity funding for USF's MD program was appropriated for 2009-10).
- \$119K – \$285K average starting salary
- Annual tuition & fees 2009-10: **\$23,159** (increase of \$3,021)



In-State MD Tuition, Public Institutions 2008-09



Recommendation

15

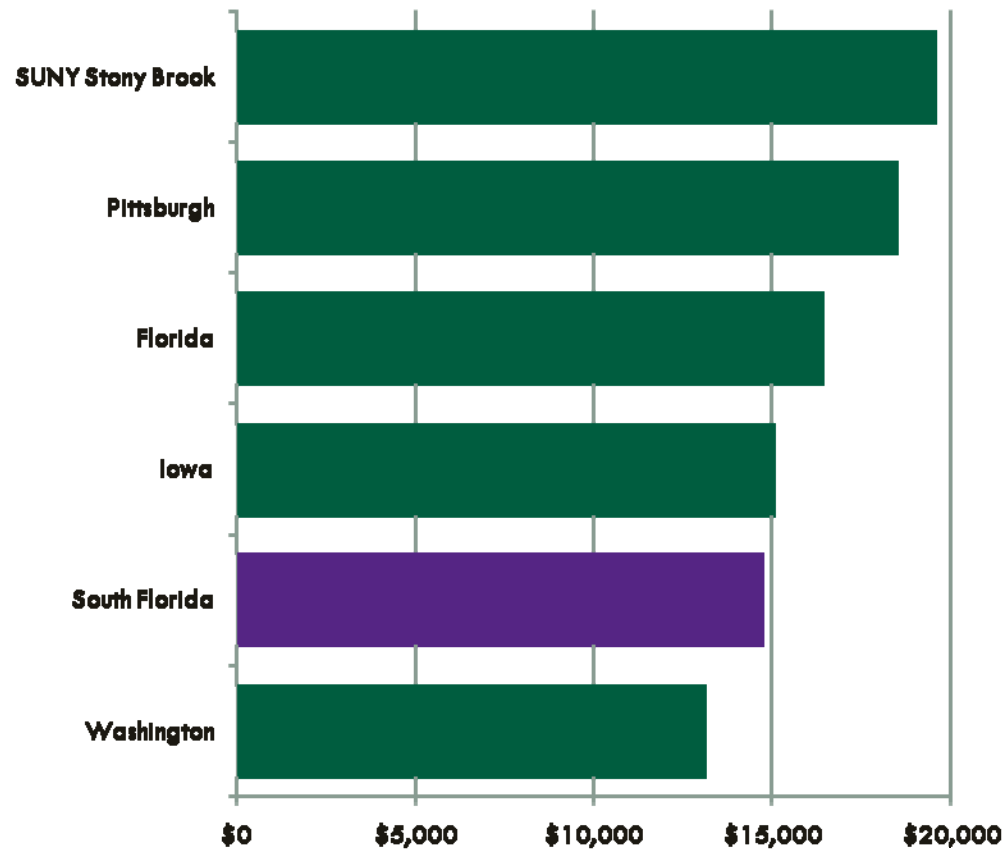
#5. 5.6% increase of in-state tuition for DPT program

High Demand • High Cost of Delivery • High Employment Potential

- Requires substantial numbers of faculty, equipment, classroom and lab facilities
- PT designated a critical workforce shortage: >30% growth anticipated in next 10 years
- \$60K – \$75K average starting salary
- Annual tuition & fees 2009-10: **\$14,751** (increase of \$782)

DPT In-State Tuition at Public Universities, 09-10

16



* USF tuition is proposed

Recommendation

17

- #6 (1) 15% reduction of out-of-state fee for all undergraduate & graduate students in the USF system (except MD & DPT)**
- (2) Implement a \$0 out-of-state differential fee for nonresident graduate students who either have a minimum of .25 FTE appointment in teaching, research, or graduate assistant categories, or are receiving full fellowship**
- Current fee very high compared to similar institutions
 - Need to recruit more out-of-state, high ability, fee-paying students to establish USF's position as a national research university
 - USF has only 4% international students (lowest among peers)
 - Reduces USF's waiver commitment to out-of-state students

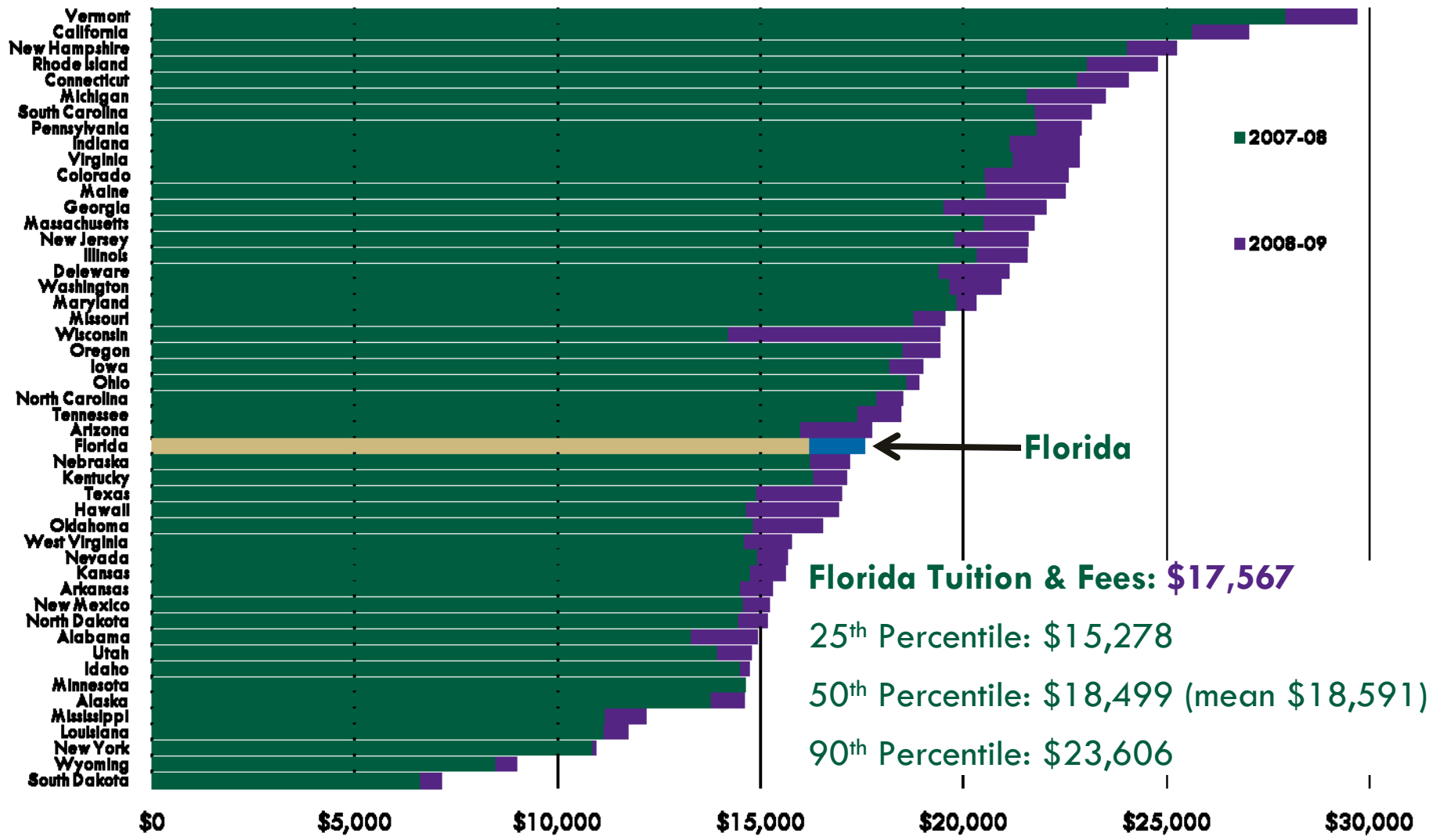
Recommendation

18

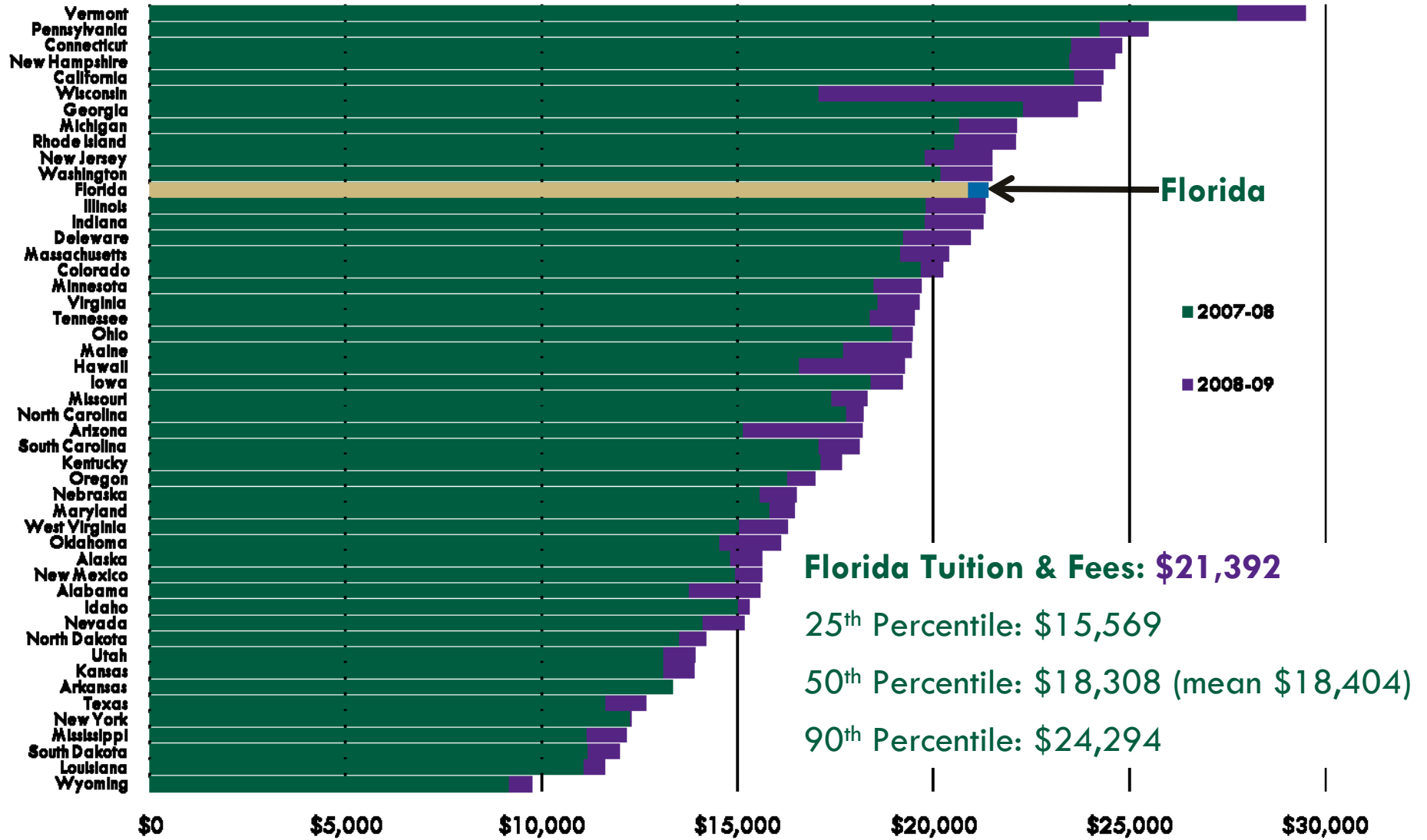
- **Total cost per year 2009-10 (full-time plus other fees):**
 - \$14,768 undergraduate (decrease of \$1,657)
 - 3 ¼ times in-state undergraduate tuition and fees

 - \$19,344 graduate (decrease of \$1,515)
 - 2 ½ times in-state graduate tuition and fees

Nonresident Undergraduate Tuition & Fees RU/VH & RU/H, 2008-09

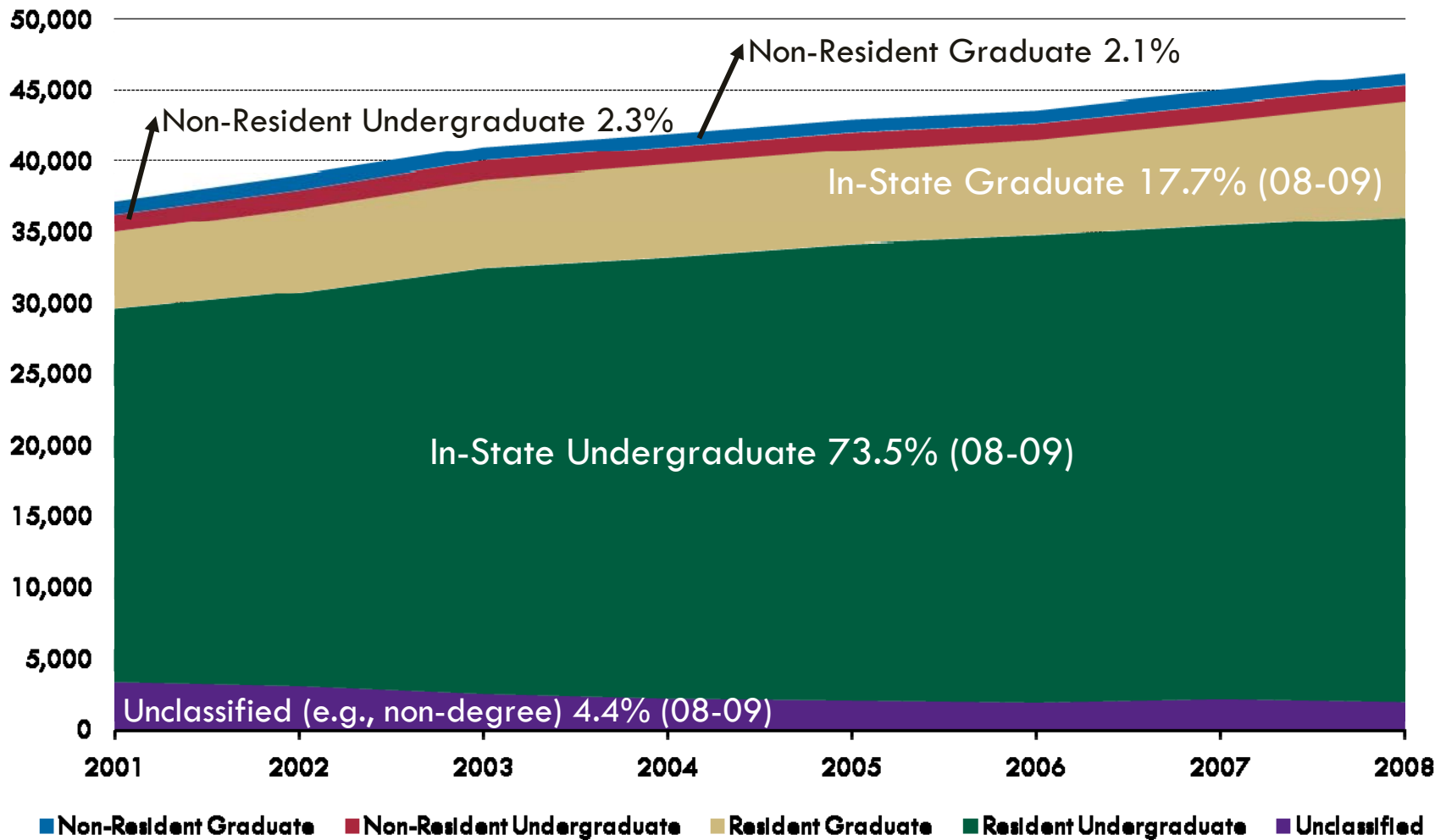


Nonresident Graduate Tuition & Fees RU/VH & RU/H, 2008-09

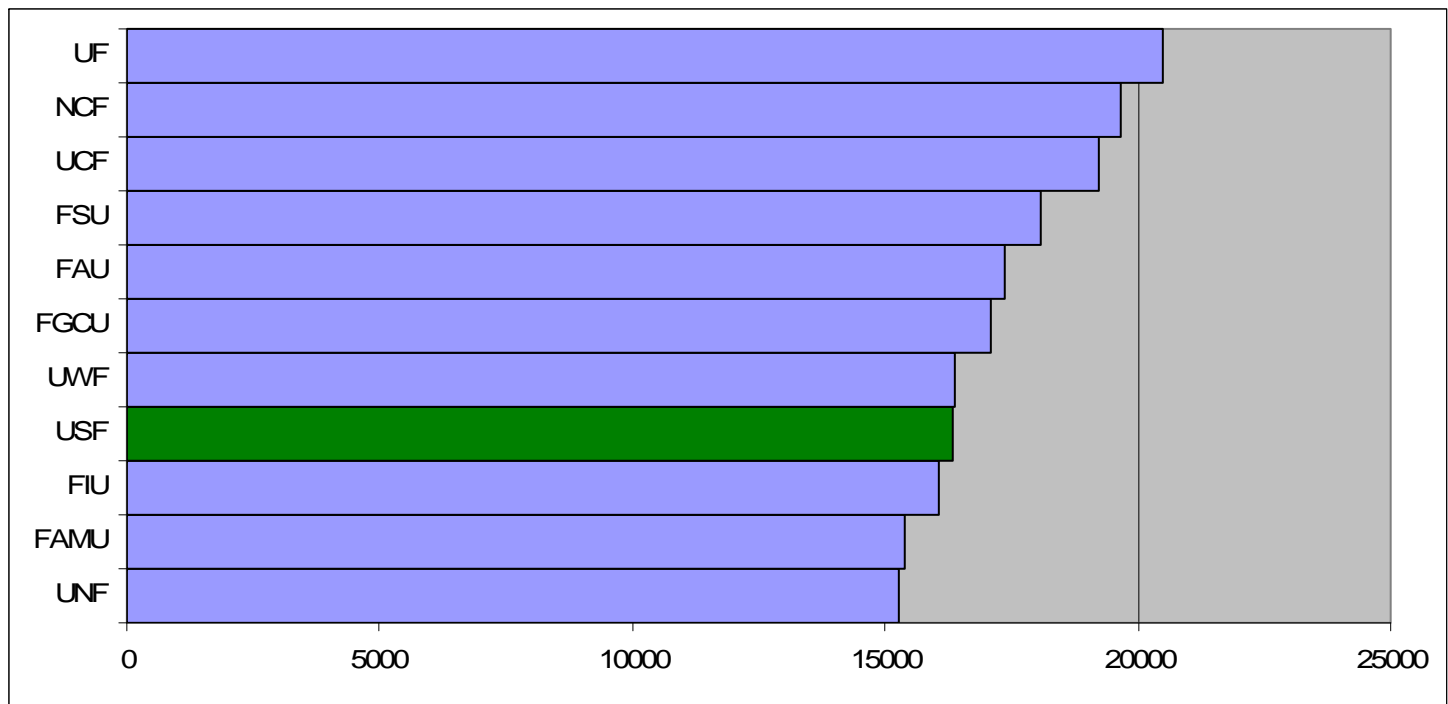


USF's Enrollment Mix

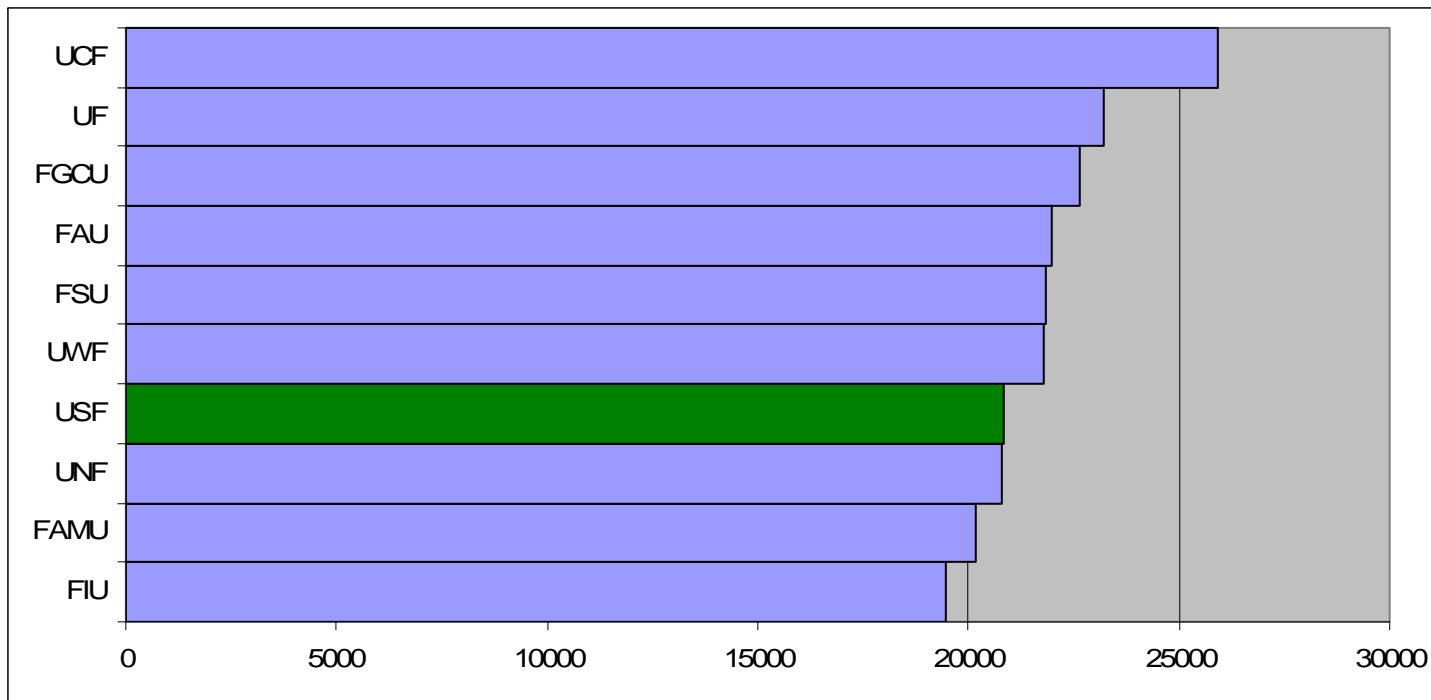
21



Nonresident Undergraduate Tuition & Fees SUS, 2008-09



Nonresident Graduate Tuition & Fees SUS, 2008-09

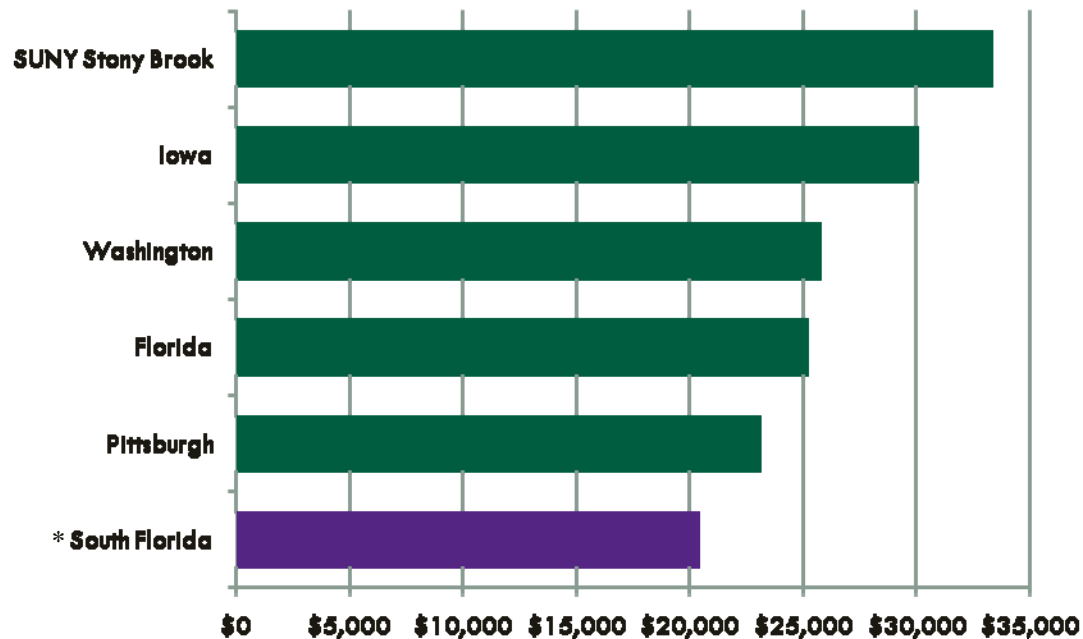


Recommendation

24

#7. 10% increase in nonresident tuition and 10% increase in out-of-state fee for DPT program

- Nonresident annual tuition increase from \$14,240.11 to \$15,664.12
- Out-of-state annual fee increase from \$4,746.70 to \$5,221.17



Total annual nonresident student cost 2009-10 (tuition + fees):

\$20,885 (increase of \$1,898)

** USF tuition is proposed*

Summary of Proviso & Recommendations for Approval

25

Appropriation Proviso: 8% increase of *in-state* tuition for all undergraduates in the USF system

(Contingent upon Governor's approval)

Recommendations:

1. 7% *tuition differential fee* for all undergraduate courses in the USF system; students who are continuously enrolled since July 1, 2007 or have prepaid contract in effect before July 1, 2007 are exempt from this fee.
(Contingent upon BOG approval)
2. 10% increase of graduate *in-state* tuition (for all students within the USF system, except MD and DPT programs)
3. 10% increase of graduate *in-state* tuition for CRNA and DNP programs offered by the College of Nursing
4. 15% increase of professional *in-state* tuition for MD program
5. 5.6% increase of professional *in-state* tuition for DPT program
6. (1) 15% reduction of the *out-of-state fee* for all nonresident undergraduate and graduate students in the USF system (except MD and DPT programs)

(2) Implement a \$0 out-of-state differential fee for nonresident graduate students who either have a minimum of .25 FTE appointment in teaching, research, or graduate assistant categories, or are receiving full fellowship
7. 10% increase of *nonresident tuition* and 10% increase of *out-of-state fee* for DPT program